

Mission Statement:




“Inspire all students to achieve personal excellence, pursue world-class standards and be self-directed, lifelong learners.”



Quality Profile

2019-2020

STATISTICS BY GRADE LEVEL

HIGH SCHOOL		MIDDLE SCHOOL	ELEMENTARY SCHOOL
Graduation rate	97%		
Percent of students enrolled in classes with the potential to earn...	College Credit 30%	High School Credit 50%	
High school credit earned by middle school students		189	
Percent of students meeting the 3rd grade reading guarantee			98%
Percent of students reading at grade level by mid-year			Kindergarten- 86% 1st Grade- 73% 2nd Grade- 78% 3rd Grade- 84% 4th Grade- 76%
Course offerings in the arts	11	13	13
Hours invested by students for community service	15,464	350	
Percent of students participating in an extracurricular activity	63%	59%	31%
Scholarship money awarded	\$74,600		
Number of AP courses taken	10		
Percent of teachers that hold a Master's Degree or higher	100%	86%	82%
Number of grant funded programs	24	12	12
Attendance Rate	96%	96%	96%



PROGRESS DETAILS

These tables show the progress scores by test grade and subject for students in grades 4–8 and some end-of-course tests, and includes up to three years of data as available.

PROGRESS						
TEST GRADE	English Language Arts		Mathematics	Science	All Tests	
All Grades						
4th Grade						
5th Grade						
6th Grade						
7th Grade						
8th Grade						
	English Language Arts I	English Language Arts II	Algebra	Geometry	Mathematics I	Mathematics II
All Grades						

The Progress Component measures how groups of students made progress as compared to the statewide expectation of growth. The expectation of growth is based on how students in the group performed, on average, compared to other students like them across the state.

LEGEND

	Students made more progress than expected – significant evidence
	Students made more progress than expected – moderate evidence
	Students made progress similar to the statewide expectation – evidence
	Students made less progress than expected – moderate evidence
	Students made less progress than expected – significant evidence
	Value added data is not available



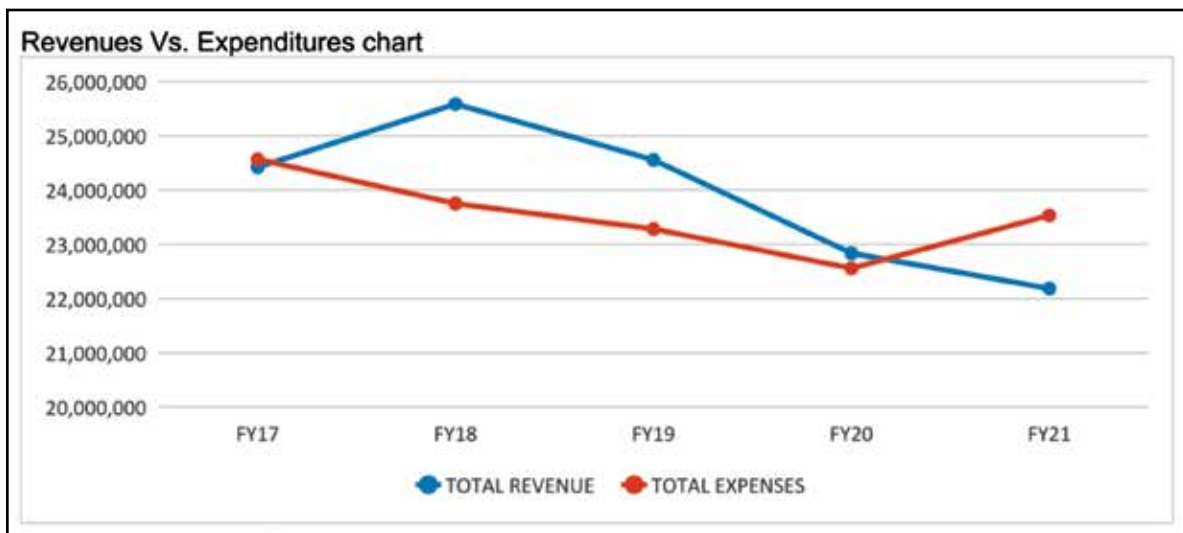
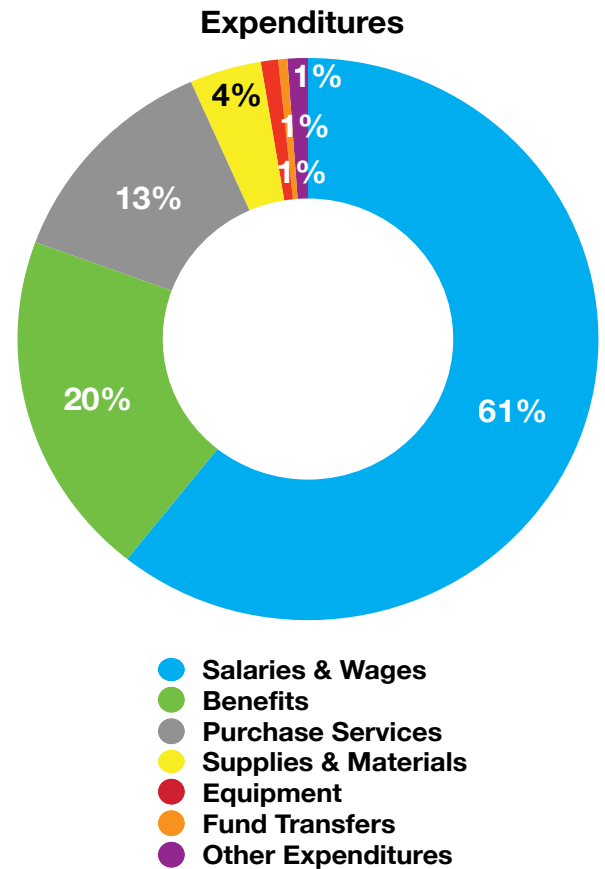
Quality Profile

2019-2020

FINANCES

Revenue School Year 18-19	
Real Estate Taxes	\$9,506,145
Homestead & Rollback	\$8,599,690
State Foundation (Net)	\$3,209,999
Other Revenue	\$868,740
Total income	\$22,184,574

Expenditures	
Salaries & Wages	\$14,281,552
Benefits	\$4,684,243
Purchase Services	\$3,011,685
Supplies & Materials	\$940,227
Equipment	\$226,745
Fund Transfers	\$120,000
Other Expenditures	\$267,240
Total expenses	\$23,531,692



Updated figures will be added to the finance department's section of our district website when they become available.

GRANT FUNDS RECEIVED

- Federal: \$1,498,030.48
- State: \$47,220.65
- Other: \$9,475.00
- TOTAL: \$1,554,726.00**

Expenditures Per Pupil \$13,323
(Data from 2018 – 2019 school year.)

Years since the District has been on the ballot for an operating levy 44